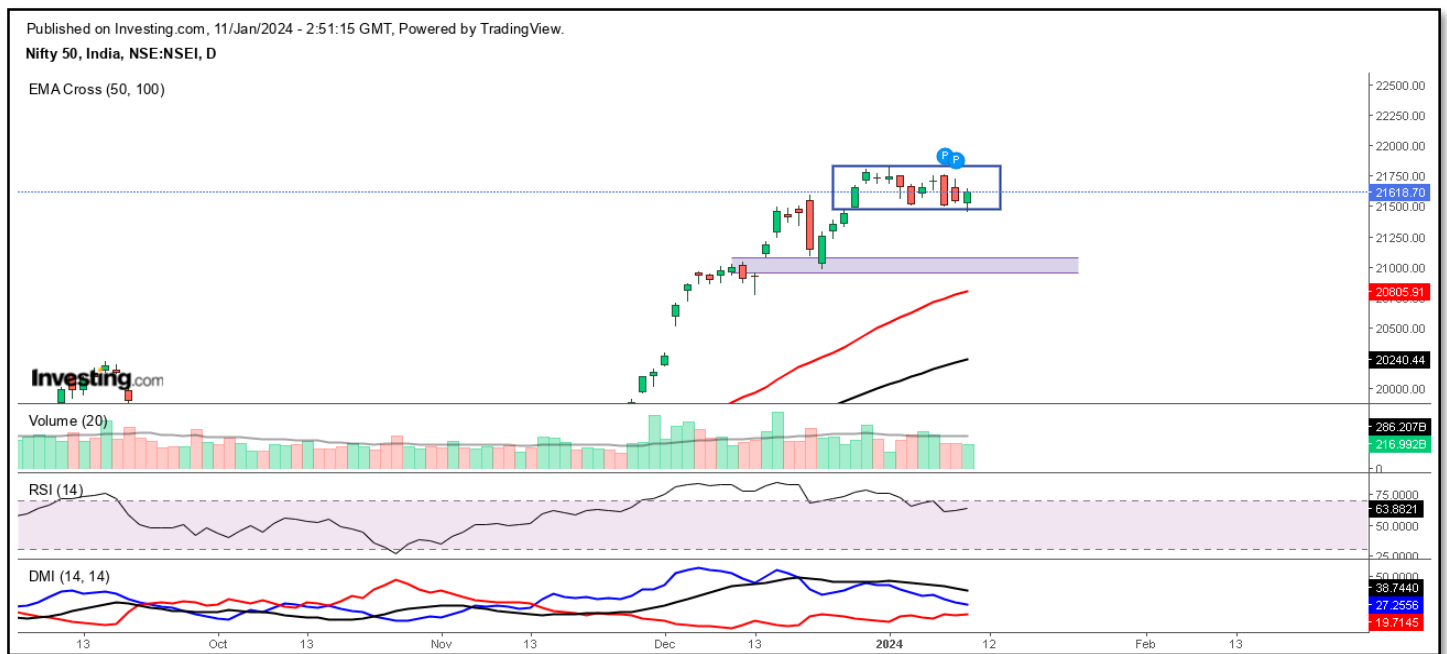




# Daily Market Strategy

11<sup>th</sup> January, 2023

## Technical Outlook: Nifty



The Index opened on a flat note and traded near the low throughout the first half and buying was witnessed in the second half which led nifty to close near its day high forming a bullish candle stick pattern. The Index is trading in a range from past few days. For any decisive move index need to close below/above 21468/21840 levels.

On the EMA front, a price is above significant EMAs and thus indicates it might take support near the EMA's. The Slow EMA 50, which indicates a positive trend, follows this trend and is moving upwards. After a cool off in RSI, it has started moving in the upward direction. The DI's is flatten indicating a flat market whereas ADX falling also indicates that there is no strength in current market.

On the OI front highest OI on the Put side is witnessed at 21500 levels (Short Build-Up) followed by 21600 levels (Short Build Up), on the Call Side highest OI is witnessed at 21800 levels (Short Build-Up) followed by 22000 (Short Build-Up).

The OI is indicating that we might see a moment in the narrow range and volatility may increase in coming session in the Nifty with we might see support of 21500 to the hurdle mark of 21800 levels. If the index fails to comply with any of these above mentioned thresholds, additional direction may be seen.

The PCR is standing at 0.82 which indicates majority of work is done on the Call side. On the other hand, INDIA VIX closed at 12.97 (2.21% Downside), which indicates the volatility remains in the range and can expect a movement of 0.81% upside-downside (1 S.D)

**Sr. Technical Research Analyst**

Mr. Kunal Kamble

**Disclosure:**

**Disclosure:**

Bonanza Portfolio Ltd here by declares that views expressed in this report accurately reflect view point with subject to companies/securities. Bonanza Portfolio Ltd is responsible for the preparation of this research report and has taken reasonable care to achieve and maintain independence and objectivity in making any recommendations. Bonanza Portfolio Ltd or its associates or Analyst or his relatives may or may not hold beneficial ownership of 1% or more in the subject company at the end of the month immediately preceding the date of publication of this research report. Bonanza Portfolio Ltd operates under the regulation of SEBI RegnNo. INH100001666

**Disclaimer:**

This research report has been published by Bonanza portfolio Ltd and is meant solely for use by the recipient and is not for circulation. This document is for information purposes only and information / opinions/ views are not meant to serve as a professional investment guide for the readers. Reasonable care has been taken to ensure that information given at the time believed to be fair and correct and opinions based thereupon are reasonable, due to the nature of research it cannot be warranted or represented that it is accurate or complete and it should not be relied upon as such. If this report is inadvertently sent or has reached to any individual, same may be ignored and brought to the attention of the sender. Preparation of this research report does not constitute a personal recommendation or take into account the particular investment objectives, financials situations, and or needs of individual clients. Past performance is not a guide for future performance. This Report has been prepared on the basis of publicly available information, internally developed data and other sources believed by Bonanza portfolio Ltd to be reliable. This report should not be taken as the only base for any market transaction; however this data is representation of one of the support document among other market risk criterion. The market participant can have an idea of risk involved to use this information as the only source for any market related activity. The distribution of this report in definite jurisdictions may be restricted by law, and persons in whose custody this report comes, should observe, any such restrictions. The revelation of interest statements integrated in this analysis are provided exclusively to improve & enhance the transparency and should not be treated as endorsement of the views expressed in the analysis. The price and value of the investments referred to in this report and the income from them may go down as well as up. Bonanza portfolio Ltd or its directors, employees, affiliates or representatives do not assume any responsibility for, or warrant the accuracy, completeness, adequacy and reliability of such information / opinions / views. While due care has been taken to ensure that the disclosures and opinions given are fair and reasonable, none of the directors, employees, affiliates or representatives of Bonanza portfolio Ltd shall be liable. Research report may differ between Bonanza portfolio Ltd RAs and other companies on account of differences in, personal judgment and difference in time horizons for which recommendations are made. Research entity has not been engaged in market making activity for the subject company. Research analyst has not served as an officer, director or employee of the subject company. Research analyst have not received any compensation/benefits from the Subject Company or third party in connection with the research report

*Bonanza Portfolio Ltd .Bonanza House, PlotNo.M-2, Cama Industrial Estate. Walbhat Road ,Goregaon(E),Mumbai-*

*400063 Website: <https://www.bonanzaonline.com>*

*SEBI Regn. No.: INZ000212137*

*BSECM: INB011110237 | BSEF&O: INF011110237 | MSEI: INE260637836*

*| CDSL: a) 12033500 |*

*NSDL: a) IN301477 | b) IN301688 (Delhi) | PMS: INP000000985 | AMFI: ARN-0186*

*2018 © [BonanzaPortfolioLtd.](#)  
[BonanzaPortfolioLtd.](#)*