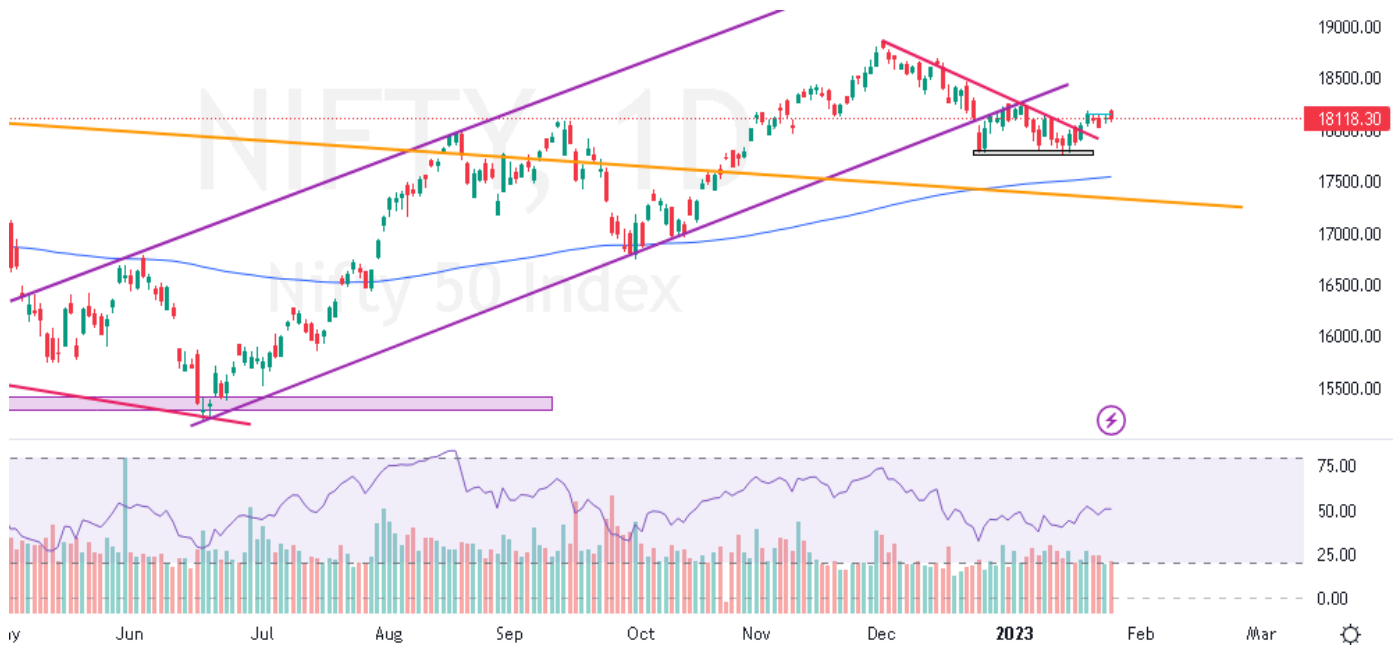


25th Jan, 2023



Technical Outlook: Nifty

Nifty, after opening with a gap up as indicated by SGX nifty remained sideways throughout the day amidst global sentiment. The Index managed to close above 18100 but somehow the conviction of fresh long positions will be higher above 18250-18300 levels. Nifty has made a bearish candle on the daily timeframe and till the range of 17750-18300 is broken on either side, it is expected to remain sideways. Nifty PSU BANK was the top loser where as Nifty AUTO was the top gainer today.

On the indicator front, RSI is showing a reading of 50 and the 200 EMA is at around 17548 on the daily timeframe. The advance to decline ratio is in favor of bears where 19 stocks are on advancing side and 31 stocks are on declining side. India VIX increased by 2.87% from 13.61 to 13.6575 levels below its 200 EMA.

Important support levels for nifty are at around 18050, 17900 and 17750 whereas the resistance levels are at 18200, 18350 and 18500. On the options front, short covering is seen in, in the money calls whereas long unwinding is seen in, deep in the money puts which indicates a sideways market. 18200 and 18100 has highest short buildup whereas highest long buildup is seen in 18100 and 18000.

Equity Technical Research Analyst

Mr. Mitesh Karwa

Disclosure:

Disclosure:

Bonanza Portfolio Ltd here by declares that views expressed in this report accurately reflect view point with subject to companies/securities. Bonanza Portfolio Ltd is responsible for the preparation of this research report and has taken reasonable care to achieve and maintain independence and objectivity in making any recommendations. Bonanza Portfolio Ltd or its associates or Analyst or his relatives may or may not hold beneficial ownership of 1% or more in the subject company at the end of the month immediately preceding the date of publication of this research report.

Bonanza Portfolio Ltd operates under the regulation of SEBI Regn No. INH100001666

Disclaimer:

This research report has been published by Bonanza portfolio Ltd and is meant solely for use by the recipient and is not for circulation. This document is for information purposes only and information / opinions / views are not meant to serve as a professional investment guide for the readers. Reasonable care has been taken to ensure that information given at the time believed to be fair and correct and opinions based thereupon are reasonable, due to the nature of research it cannot be warranted or represented that it is accurate or complete and it should not be relied upon as such. If this report is inadvertently send or has reached to any individual, same may be ignored and brought to the attention of the sender. Preparation of this research report does not constitute a personal recommendation or take into account the particular investment objectives, financial situations, or needs of individual clients. Past performance is not a guide for future performance. This Report has been prepared on the basis of publicly available information, internally developed data and other sources believed by Bonanza portfolio Ltd to be reliable. This report should not be taken as the only base for any market transaction; however this data is representation of one of the support document among other market risk criterion. The market participant can have an idea of risk involved to use this information as the only source for any market related activity. The distribution of this report in definite jurisdictions may be restricted by law, and persons in whose custody this report comes, should observe, any such restrictions. The revelation of interest statements integrated in this analysis are provided exclusively to improve & enhance the transparency and should not be treated as endorsement of the views expressed in the analysis. The price and value of the investments referred to in this report and the income from them may go down as well as up. Bonanza portfolio Ltd or its directors, employees, affiliates or representatives do not assume any responsibility for, or war rant the accuracy, completeness, adequacy and reliability of such information / opinions / views. While due care has been taken to ensure that the disclosures and opinions given are fair and reasonable, none of the directors, employees, affiliates or representatives of Bonanza portfolio Ltd shall be liable. Research report may differ between Bonanza portfolio Ltd RAs and other companies on account of differences in, personal judgment and difference in time horizons for which recommendations are made. Research entity has not been engaged in market making activity for the subject company. Research analyst has not served as an officer, director or employee of the subject company. Research analyst have not received any compensation/benefits from the subject company or third party in connection with the research report

Bonanza Portfolio Ltd. Bonanza House, Plot No. M-2, Cama Industrial Estate. Walbhat Road, Goregaon (E), Mumbai - 400063 Web site: <https://www.bonanzaonline.com>

SEBI Regn. No.: INZ000212137

BSE CM: INB 011110237 | BSE F&O: INF 011110237 | MSEI: INE 260637836

| CDSL: a) 120 33500 |

NSDL: a) IN 301477 | b) IN 301688 (Delhi) | PMS: INP 000000985 | AMFI: ARN -0186

*2018 © [Bonanza Portfolio Ltd.](#)
[Bonanza Portfolio Ltd.](#)*