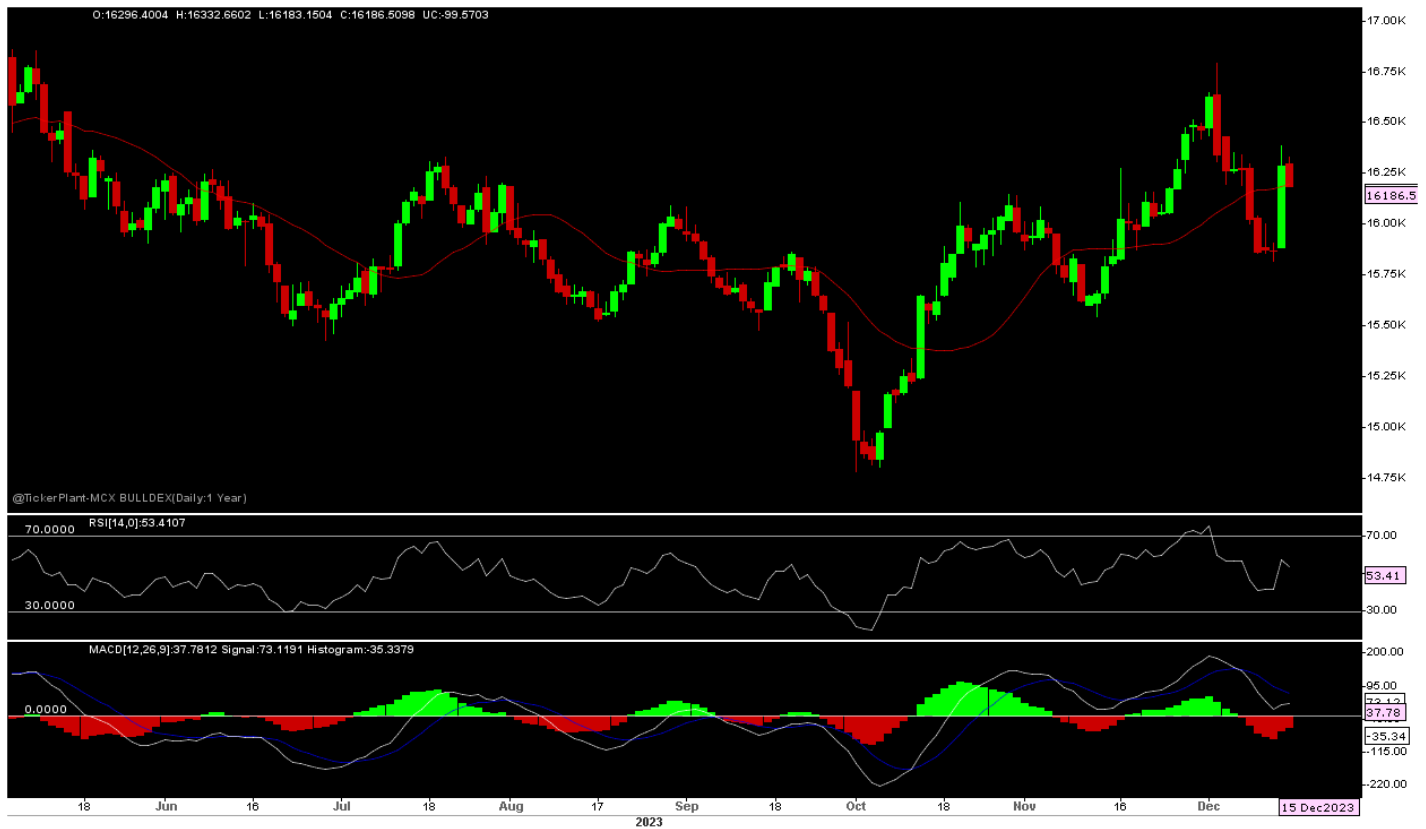




Daily Technical Outlook: Metals and Energy Dec 18th, 2023

Bullion Index



Sources – Ticker Plant and Bonanza Research

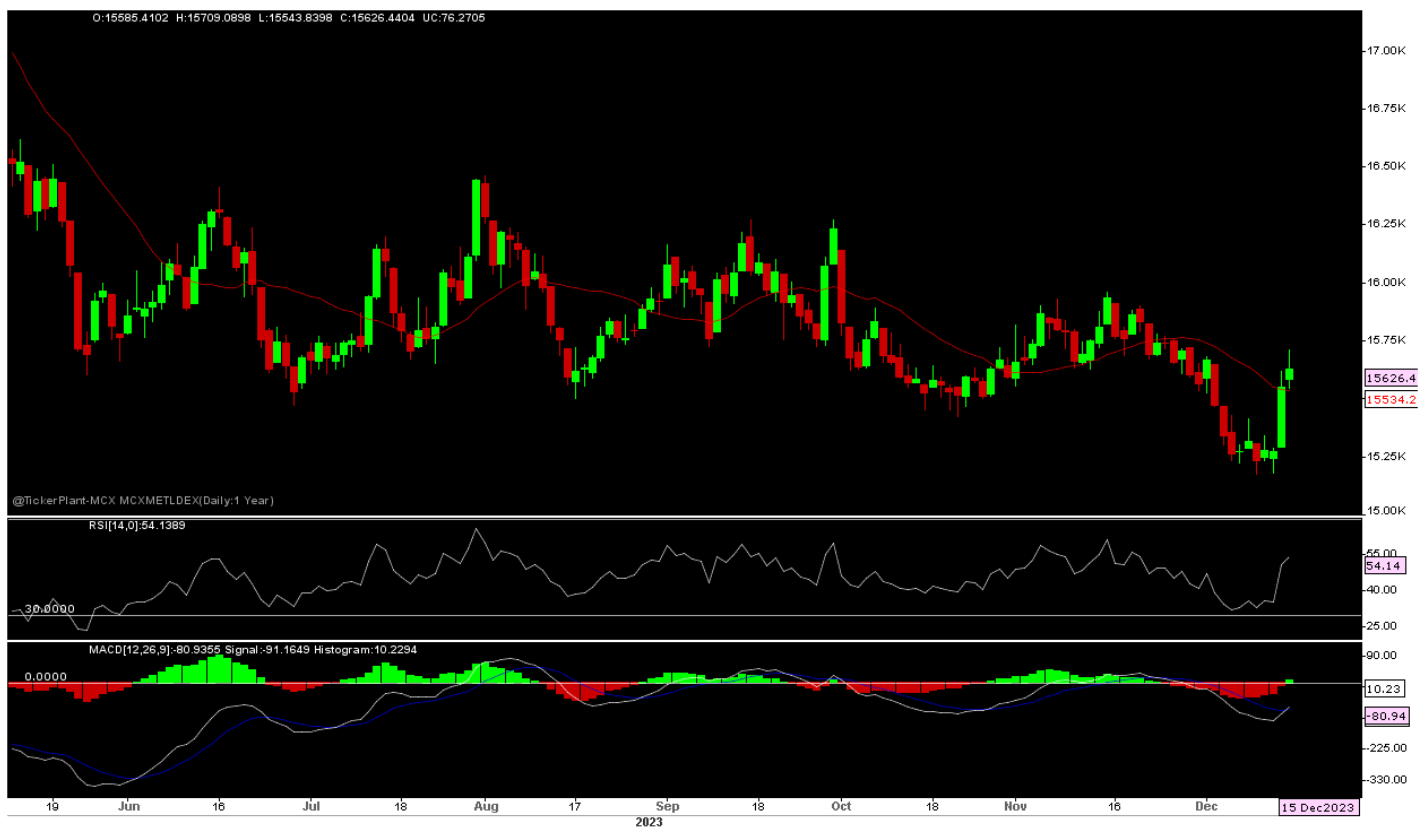
The Benchmark index witnessed a Flat Opening on 15/12/23 and remain on sideways to small range till evening session strong rupee against dollar makes pressure while weakness seen in dollar index offer support in overseas market while in evening after US data dollar indx recover

and sharp sell off seen in bullion which all resulted in index close near days low and well below over previous day close.

Now, Index has Resistance at 16450, as long hold, more Downside expected towards 15800-15700 in short term. Other side only Sustain above 16450-16800 seen again 17000-17200 in days to come.

Price is trading above short term 13-days SMA and RSI at 53-mark with Upward slop indicates more room for upside in the counter. Other side below zero line MACD seen more selling pressure at every Rally.

Metals Index



Sources – Ticker Plant and Bonanza Research

The Benchmark index seen a Flat Opening on 15/12/23 and remain on higher side till evening session on fresh stimulus from China bank which might revive demand scenario while in evening after recovery in dollar index sell off seen in base metals pack and resulted in index close marginally above over previous day closing.

Now index has a Resistance at 15700, as long hold, more Downside expected towards 15100-15000 in medium term. While on higher side only sustain above 15700-15950 seen 16300-500 / abv Uprally in days to come.

Price is trading around short term 13 SMA while RSI at 54-marks with Upward slop indicates mix of the clue in the counter. Other side below zero line MACD indicates more selling pressure at every rally.

Technical Levels

Commodity	Contract Month	CLOSE	S1	S2	R1	R2	TREND
BULLIONS(Rs.)							
Gold M	Jan	61991	61850	61500	62350	62650	BULLISH
Silver M	Feb.	74557	74000	73100	75300	76000	BULLISH

ENERGY

Crude Oil	Dec.	5952	5840	5780	6030	6100	BULLISH
Natural Gas	Dec.	210.40	199	191	212	220	SIDEWAYS

BASE METALS

Copper	Dec.	725.65	718	710	731	737	BULLISH
Zinc	Dec.	223.20	218.5	215	224	227	BULLISH
Lead	Dec.	184.10	180	178	185.50	188	BEARISH
Nickel	Dec.	1423.80	1350	1300	1450	1500	SIDEWAYS

Technical Research Analyst

Vibhu Ratandhara

Disclosure:

M/s. Bonanza Portfolio Ltd here by declares that views expressed in this report accurately reflect view point with subject to companies/securities. M/s. Bonanza Portfolio Ltd has taken reasonable care to achieve and maintain independence and objectivity in making any recommendations. The Analysts engaged in preparation of this Report or his/her relative: - (a) do not have any financial interests in the subject company mentioned in this Report; (b) do not own 1% or more of the equity securities of the subject company mentioned in the report as of the last day of the month preceding the publication of the research report; (c) do not have any material conflict of interest at the time of publication of the Report. The Analysts engaged in preparation of this Report:- (a) have not received any compensation from the subject company in the past twelve months; (b) have not managed or co-managed public offering of securities for the subject company in the past twelve months; (c) have not received any compensation for investment banking or merchant banking or brokerage services from the subject company in the past twelve

months; (d) have not received any compensation for products or services other than investment banking or merchant banking or brokerage services from the subject company in the past twelve months; (e) has not received any compensation or other benefits from the subject company or third party in connection with the Report; (f) has not served as an officer, director or employee of the subject company; (g) is not engaged in market making activity for the subject company.

M/s. Bonanza Portfolio Ltd operates under the regulation of SEBI Regn No. INH100001666 and research analyst engaged in preparation of report

Disclaimer:

This research report has been published by M/s. Bonanza portfolio Ltd and is meant solely for use by the recipient and is not for circulation. This document is for information purposes only and information / opinions / views are not meant to serve as a professional investment guide for the readers. Reasonable care has been taken to ensure that information given at the time believed to be fair and correct and opinions based thereupon are reasonable, due to the nature of research it cannot be warranted or represented that it is accurate or complete and it should not be relied upon as such. If this report is inadvertently sent or has reached to any individual, same may be ignored and brought to the attention of the sender. Preparation of this research report does not constitute a personal recommendation or take into account the particular investment objectives, financial situations, or needs of individual clients. Past performance is not a guide for future performance. This Report has been prepared on the basis of publicly available information, internally developed data and other sources believed by Bonanza portfolio Ltd to be reliable. This report should not be taken as the only base for any market transaction; however this data is representation of one of the support document among other market risk criterion. The market participant can have an idea of risk involved to use this information as the only source for any market related activity. The distribution of this report in definite jurisdictions may be restricted by law, and persons in whose custody this report comes, should observe, any such restrictions. The revelation of interest statements integrated in this analysis are provided exclusively to improve & enhance the transparency and should not be treated as endorsement of the views expressed in the analysis. The price and value of the investments referred to in this report and the income from them may go down as well as up. Bonanza portfolio Ltd or its directors, employees, affiliates or representatives do not assume any responsibility for, or warrant the accuracy, completeness, adequacy and reliability of such information / opinions / views. While due care has been taken to ensure that the disclosures and opinions given are fair and reasonable, none of the directors, employees, affiliates or representatives of M/s. Bonanza portfolio Ltd shall be liable. Research report may differ between M/s. Bonanza portfolio Ltd RAs and other companies on account of differences in, personal judgment and difference in time horizons for which recommendations are made. Research entity has not been engaged in market making activity for the subject company. Research analyst has not served as an officer, director or employee of the subject company. Research analyst have not received any compensation/benefits from the Subject Company or third party in connection with the research report

M/s. Bonanza Portfolio Ltd at Bonanza House, Plot No. M-2, Cama Industrial Estate. Walbhat Road,
Goregaon (E), Mumbai – 400063 Web site: <https://www.bonanzaonline.com>

SEBI Regn. No.: INZ000212137

BSE CM: INB 011110237 | BSE F&O: INF 011110237 | MSEI: INE 260637836

| CDSL: a) 120 33500 |

NSDL: a) IN 301477 | b) IN 301688 (Delhi) | PMS: INP 000000985 | AMFI: ARN -0186
