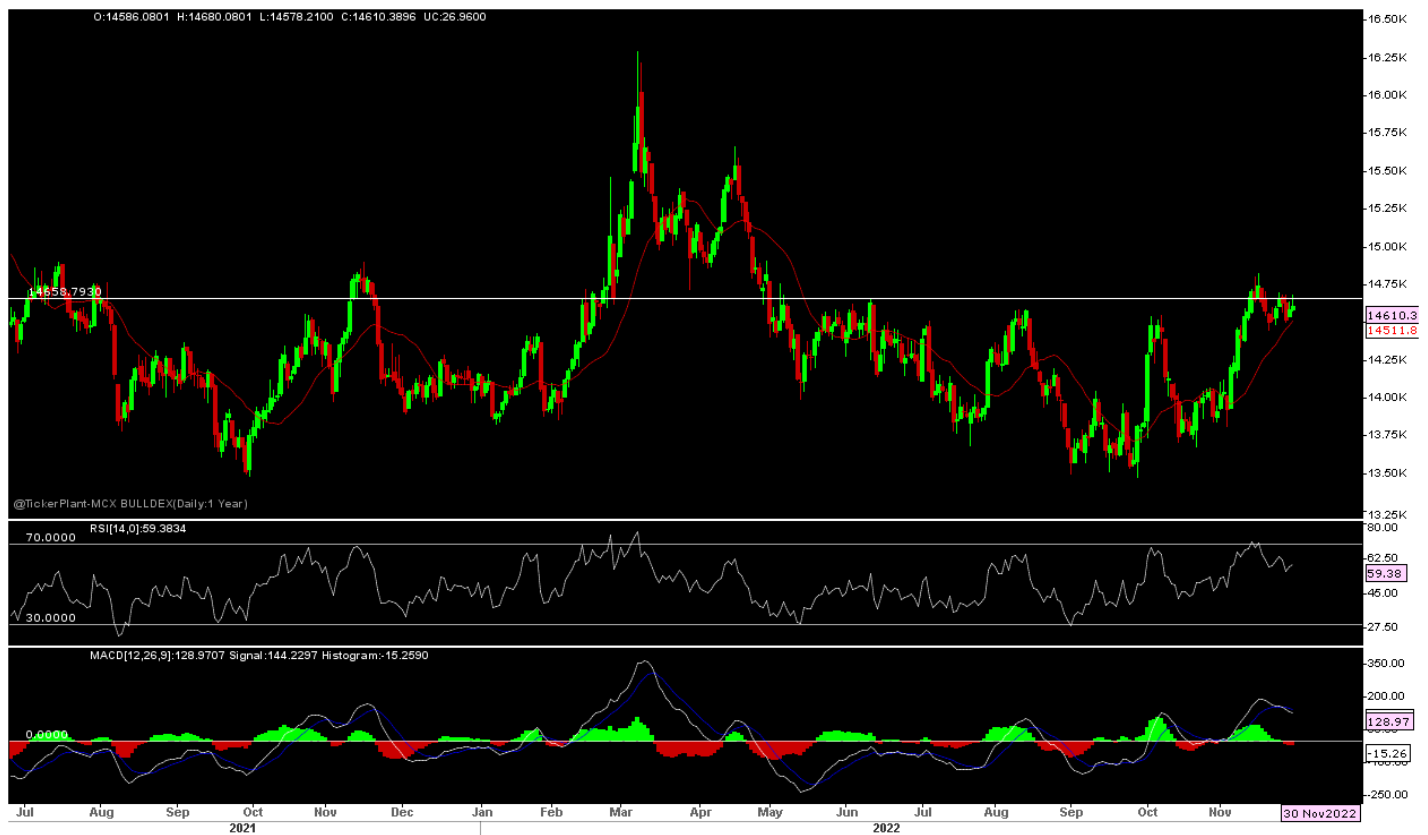




Daily Technical Outlook: Metals and Energy Dec 1th, 2022

Bullion Index



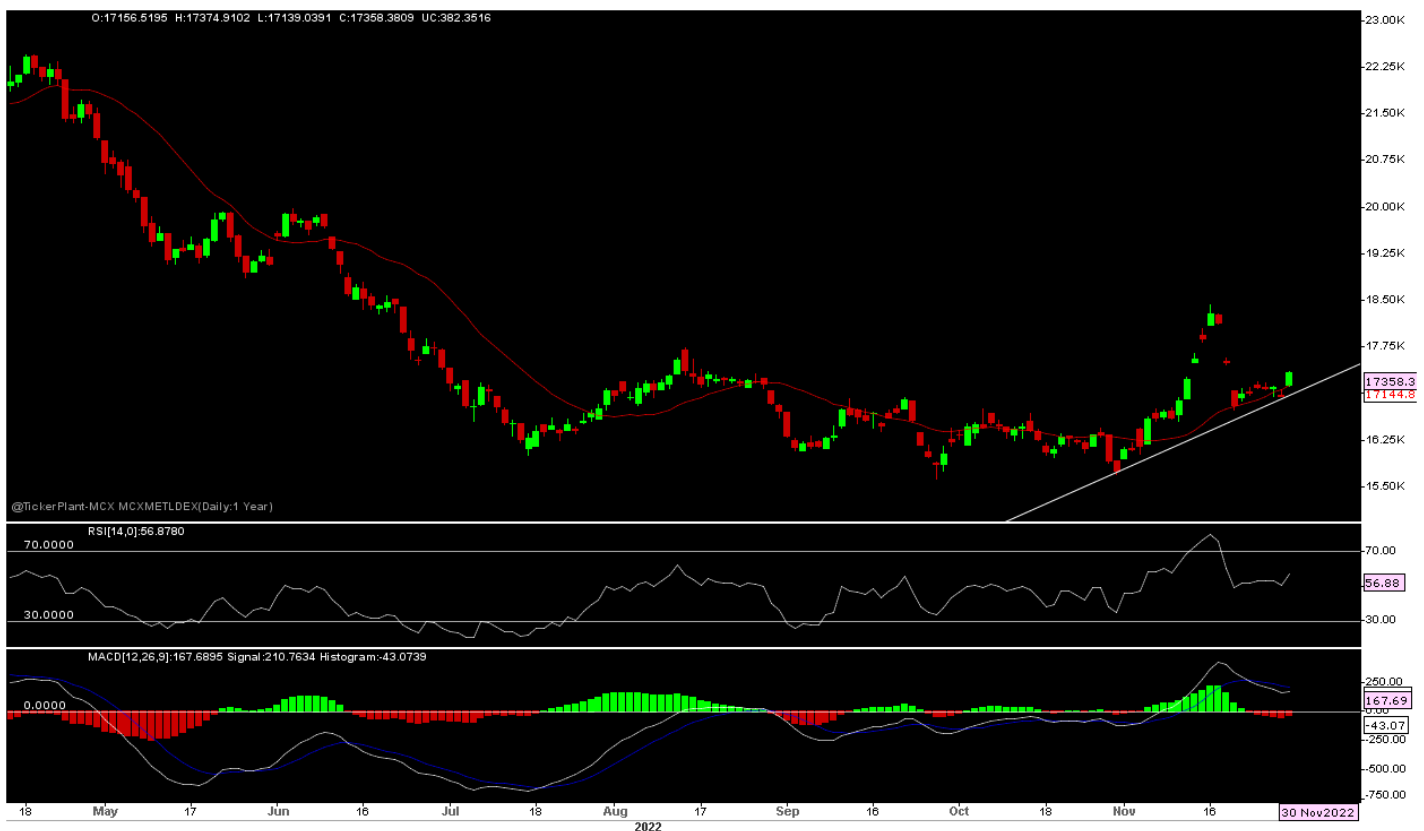
The Benchmark index witnessed a Flat Opening on 30/11/22 and remain on higher side till evening session, however some profit booking seen at higher level after some recovery in

dollar index makes prices fall towards days low but manage to close well above previous day close.

Now, Index has Support at 14400-14300, as long hold, more Upside expected towards 14900-15000 in short term. Other side only Sustain below 14300 seen 14100-13800-13650-13450-13400 below down Rally sharp in days to come.

Price is trading above short term 13-days SMA and RSI at 59-mark with downward slop indicates mix of the view in the counter. Other side above zero line MACD likely to support prices at every dip.

Metals Index



The Benchmark index seen a Gap UP opening on 30/11/22 and remain on higher side through out the day as some relief news likely from top metal consumer china over lockdown and revival in metals demand resulted in price close well above previous day closing.

Now index has a Support at 17100-16950-16700, as long hold, more Upside expected towards 18100-18400 in medium term. While on lower side only sustain below 16700-16550 will turn scenario bearish again towards 16000-15650 in days to come.

Created with

 **nitro**PDF[®] professional

download the free trial online at nitropdf.com/professional

Price is trading above short term 13 SMA while RSI at 57-marks with Downward slop indicates mix of the view in the counter. Other side above zero line MACD indicates more buying at every dip.

Technical Levels

Commodity	Contract Month	CLOSE	S1	S2	R1	R2	TREND
BULLIONS(Rs.)							
Gold M	Jan	52672	52400	52200	53000	53350	SIDEWAYS
Silver M	Feb.	63562	62900	61800	64000	64600	BULLISH

ENERGY

Crude Oil	Dec.	65571	6425	6330	6670	6750	SIDEWAYS
Natural Gas	Dec.	568.40	555	540	585	610	BEARISH

BASE METALS

Created with



download the free trial online at nitropdf.com/professional

Copper	Dec.	684.40	681	674	690	700	BULLISH
Zinc	Dec.	270.20	266	262	271.5	275.50	BULLISH
Lead	Dec.	184.90	181.5	178	186	190	BULLISH
Nickel	Dec.	2203	2150	2100	2250	2300	SIDEWAYS

Technical Research Analyst

Mahesh Prakot

Disclosure:

M/s. Bonanza Portfolio Ltd here by declares that views expressed in this report accurately reflect view point with subject to companies/securities. M/s. Bonanza Portfolio Ltd has taken reasonable care to achieve and maintain independence and objectivity in making any recommendations. The Analysts engaged in preparation of this Report or his/her relative: - (a) do not have any financial interests in the subject company mentioned in this Report; (b) do not own 1% or more of the equity securities of the subject company mentioned in the report as of the last day of the month preceding the publication of the research report; (c) do not have any material conflict of interest at the time of publication of the Report. The Analysts engaged in preparation of this Report:- (a) have not received any compensation from the subject company in the past twelve months; (b) have not managed or co-managed public offering of securities for the subject company in the past twelve months; (c) have not received any compensation for investment banking or merchant banking or brokerage services from the subject company in the past twelve months; (d) have not received any compensation for products or services other than investment banking or merchant banking or brokerage services from the subject company in the past twelve months; (e) has not received any compensation or other benefits from the subject company or third party in connection with the Report; (f) has not served as an officer, director or employee of

Created with



download the free trial online at nitropdf.com/professional

the subject company; (g) is not engaged in market making activity for the subject company.

M/s. Bonanza Portfolio Ltd operates under the regulation of SEBI Regn No. INH100001666 and research analyst engaged in preparation of report

Disclaimer:

This research report has been published by M/s. Bonanza portfolio Ltd and is meant solely for use by the recipient and is not for circulation. This document is for information purposes only and information / opinions / views are not meant to serve as a professional investment guide for the readers. Reasonable care has been taken to ensure that information given at the time believed to be fair and correct and opinions based thereupon are reasonable, due to the nature of research it cannot be warranted or represented that it is accurate or complete and it should not be relied upon as such. If this report is inadvertently sent or has reached to any individual, same may be ignored and brought to the attention of the sender. Preparation of this research report does not constitute a personal recommendation or take into account the particular investment objectives, financial situations, or needs of individual clients. Past performance is not a guide for future performance. This Report has been prepared on the basis of publicly available information, internally developed data and other sources believed by Bonanza portfolio Ltd to be reliable. This report should not be taken as the only base for any market transaction; however this data is representation of one of the support document among other market risk criterion. The market participant can have an idea of risk involved to use this information as the only source for any market related activity. The distribution of this report in definite jurisdictions may be restricted by law, and persons in whose custody this report comes, should observe, any such restrictions. The revelation of interest statements integrated in this analysis are provided exclusively to improve & enhance the transparency and should not be treated as endorsement of the views expressed in the analysis. The price and value of the investments referred to in this report and the income from them may go down as well as up. Bonanza portfolio Ltd or its directors, employees, affiliates or representatives do not assume any responsibility for, or warrant the accuracy, completeness, adequacy and reliability of such information / opinions / views. While due care has been taken to ensure that the disclosures and opinions given are fair and reasonable, none of the directors, employees, affiliates or representatives of M/s. Bonanza portfolio Ltd shall be liable. Research report may differ between M/s. Bonanza portfolio Ltd RAs and other companies on account of differences in, personal judgment and difference in time horizons for which recommendations are made. Research entity has not been engaged in market making activity for the subject company. Research analyst has not served as an officer, director or employee of the subject company. Research analyst have not received any compensation/benefits from the Subject Company or third party in connection with the research report

M/s. Bonanza Portfolio Ltd at Bonanza House, Plot No. M-2, Cama Industrial Estate. Walbhat Road, Goregaon (E), Mumbai – 400063 Web site: <https://www.bonanzaonline.com>

SEBI Regn. No.: INZ000212137

BSE CM: INB 011110237 | BSE F&O: INF 011110237 | MSEI: INE 260637836

| CDSL: a) 120 33500 |

NSDL: a) IN 301477 | b) IN 301688 (Delhi) | PMS: INP 000000985 | AMFI: ARN -0186

Created with

 **nitro**^{PDF} professional

download the free trial online at nitropdf.com/professional