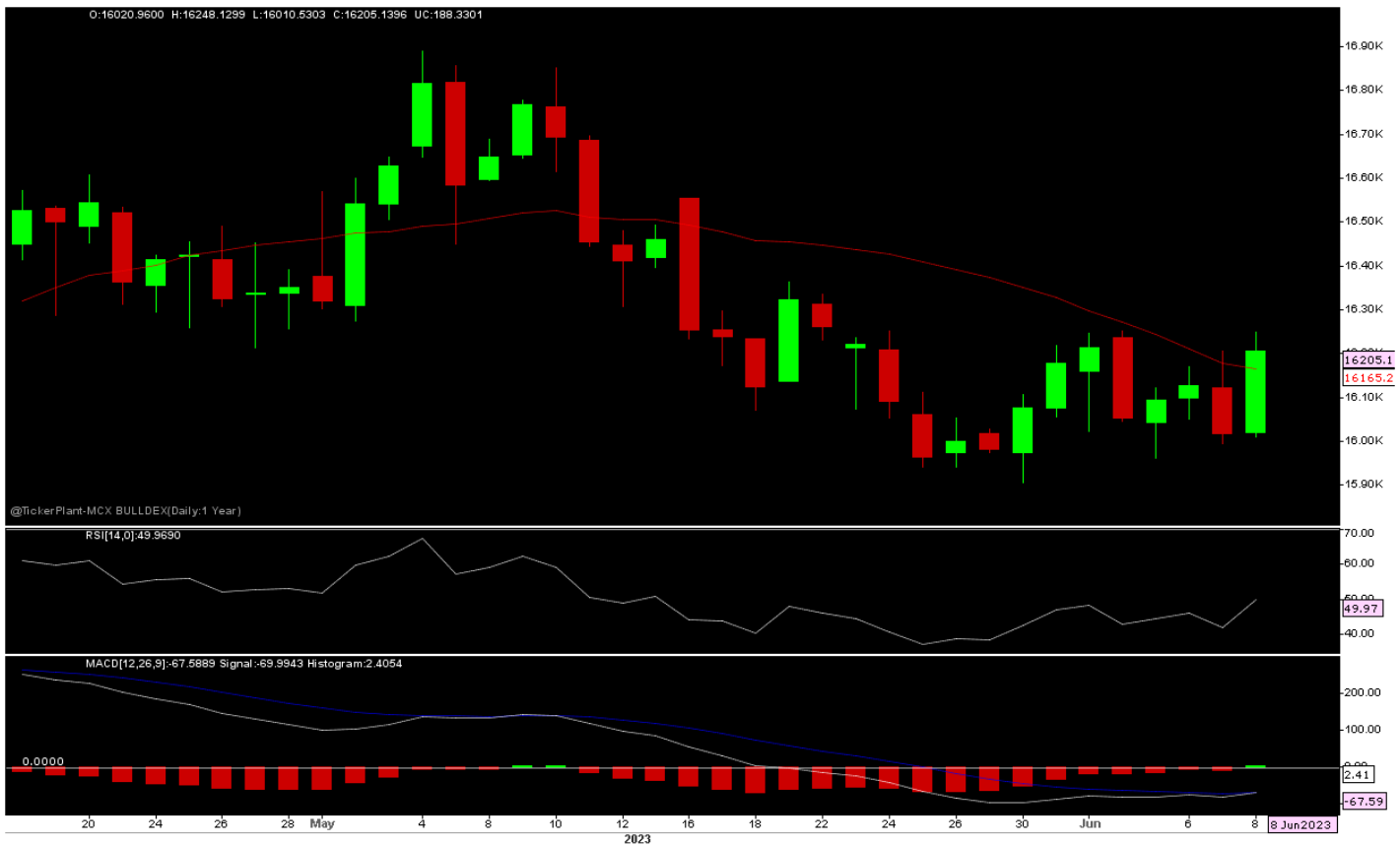




## Daily Technical Outlook: Metals and Energy June 9th, 2023

### Bullion Index



The Benchmark index witnessed a Flat Opening on 8/6/23 and remain on higher side through out the day as initially price get support from technical level after previous day fall while in evening after US jobless data dollar index fall sharply and sharp rally seen in byllion which resulted in index close near days high and well above previous day close.

Now, Index has Resistance at 16250-400, as long hold, more Downside expected towards 15900-15800 in short term. Other side only Sustain above 16400-600-900 seen 17100-17300 again in days to come.

Price is trading below short term 13-days SMA and RSI at 50-mark with marginal Upward slop indicates mix of the view in the counter. Other side below zero line MACD likely to pressure prices at every rally.

## Metals Index



The Benchmark index seen a Flat opening on 8/6/23 and remain on volatile with initially price make high but in afternoon session fall seen while again in evening after US data dollar index fall sharply and base metals index rally sharply to close near days high and well above previous day closing.

Now index has a Resistance at 16100, as long hold, more Downside expected towards 15600-15500 in medium term. While on higher side only sustain above 16050-16300-16650 seen 17000-17150/abv seen 17500-800-18000/abv 18300-18500 in days to come.

Price is trading below short term 13 SMA while RSI at 44-marks with Upward slop indicates mix of the view in the counter. Other side below zero line MACD indicates more selling pressure at every rally.

## Technical Levels

Commodity	Contract Month	CLOSE	S1	S2	R1	R2	TREND
<b>BULLIONS(Rs.)</b>							
Gold M	July	59809	59500	59250	60100	60400	SIDEWAYS
Silver M	June.	73582	72900	71800	73800	75000	BULLISH

## ENERGY

Crude Oil	June.	5903	5780	5700	5950	6060	BEARISH
Natural Gas	June.	192.90	186	177	197	205	SIDEWAYS

## BASE METALS

<b>Copper</b>	<b>June.</b>	<b>725.0</b>	<b>716</b>	<b>710.5</b>	<b>729</b>	<b>735</b>	<b>BULLISH</b>
<b>Zinc</b>	<b>June.</b>	<b>215.70</b>	<b>213</b>	<b>210</b>	<b>216.5</b>	<b>220</b>	<b>BULLISH</b>
<b>Lead</b>	<b>June.</b>	<b>182.80</b>	<b>180.0</b>	<b>178</b>	<b>184</b>	<b>186.50</b>	<b>SIDEWAYS</b>
<b>Nickel</b>	<b>June.</b>	<b>1806.0</b>	<b>1750</b>	<b>1700</b>	<b>1900</b>	<b>1950</b>	<b>SIDEWAYS</b>

### **Technical Research Analyst**

Mahesh Prakot

### **Disclosure:**

M/s. Bonanza Portfolio Ltd here by declares that views expressed in this report accurately reflect view point with subject to companies/securities. M/s. Bonanza Portfolio Ltd has taken reasonable care to achieve and maintain independence and objectivity in making any recommendations. The Analysts engaged in preparation of this Report or his/her relative: - (a) do not have any financial interests in the subject company mentioned in this Report; (b) do not own 1% or more of the equity securities of the subject company mentioned in the report as of the last day of the month preceding the publication of the research report; (c) do not have any material conflict of interest at the time of publication of the Report. The Analysts engaged in preparation of this Report:- (a) have not received any compensation from the subject company in the past twelve months; (b) have not managed or co-managed public offering of securities for the subject company in the past twelve months; (c) have not received any compensation for investment banking or merchant banking or brokerage services from the subject company in the past twelve months; (d) have not received any compensation for products or services other than investment banking or merchant banking or brokerage services from the subject company in the past twelve months; (e) has not received any compensation or other benefits from the subject company or third party in connection with the Report; (f) has not served as an officer, director or employee of

the subject company; (g) is not engaged in market making activity for the subject company.

M/s. Bonanza Portfolio Ltd operates under the regulation of SEBI Regn No. INH100001666 and research analyst engaged in preparation of report

**Disclaimer:**

This research report has been published by M/s. Bonanza portfolio Ltd and is meant solely for use by the recipient and is not for circulation. This document is for information purposes only and information / opinions / views are not meant to serve as a professional investment guide for the readers. Reasonable care has been taken to ensure that information given at the time believed to be fair and correct and opinions based thereupon are reasonable, due to the nature of research it cannot be warranted or represented that it is accurate or complete and it should not be relied upon as such. If this report is inadvertently sent or has reached to any individual, same may be ignored and brought to the attention of the sender. Preparation of this research report does not constitute a personal recommendation or take into account the particular investment objectives, financial situations, or needs of individual clients. Past performance is not a guide for future performance. This Report has been prepared on the basis of publicly available information, internally developed data and other sources believed by Bonanza portfolio Ltd to be reliable. This report should not be taken as the only base for any market transaction; however this data is representation of one of the support document among other market risk criterion. The market participant can have an idea of risk involved to use this information as the only source for any market related activity. The distribution of this report in definite jurisdictions may be restricted by law, and persons in whose custody this report comes, should observe, any such restrictions. The revelation of interest statements integrated in this analysis are provided exclusively to improve & enhance the transparency and should not be treated as endorsement of the views expressed in the analysis. The price and value of the investments referred to in this report and the income from them may go down as well as up. Bonanza portfolio Ltd or its directors, employees, affiliates or representatives do not assume any responsibility for, or warrant the accuracy, completeness, adequacy and reliability of such information / opinions / views. While due care has been taken to ensure that the disclosures and opinions given are fair and reasonable, none of the directors, employees, affiliates or representatives of M/s. Bonanza portfolio Ltd shall be liable. Research report may differ between M/s. Bonanza portfolio Ltd RAs and other companies on account of differences in, personal judgment and difference in time horizons for which recommendations are made. Research entity has not been engaged in market making activity for the subject company. Research analyst has not served as an officer, director or employee of the subject company. Research analyst have not received any compensation/benefits from the Subject Company or third party in connection with the research report

M/s. Bonanza Portfolio Ltd at Bonanza House, Plot No. M-2, Cama Industrial Estate. Walbhat Road, Goregaon (E), Mumbai – 400063 Web site: <https://www.bonanzaonline.com>

SEBI Regn. No.: INZ000212137

BSE CM: INB 011110237 | BSE F&O: INF 011110237 | MSEI: INE 260637836

| CDSL: a) 120 33500 |

NSDL: a) IN 301477 | b) IN 301688 (Delhi) | PMS: INP 000000985 | AMFI: ARN -0186

---