

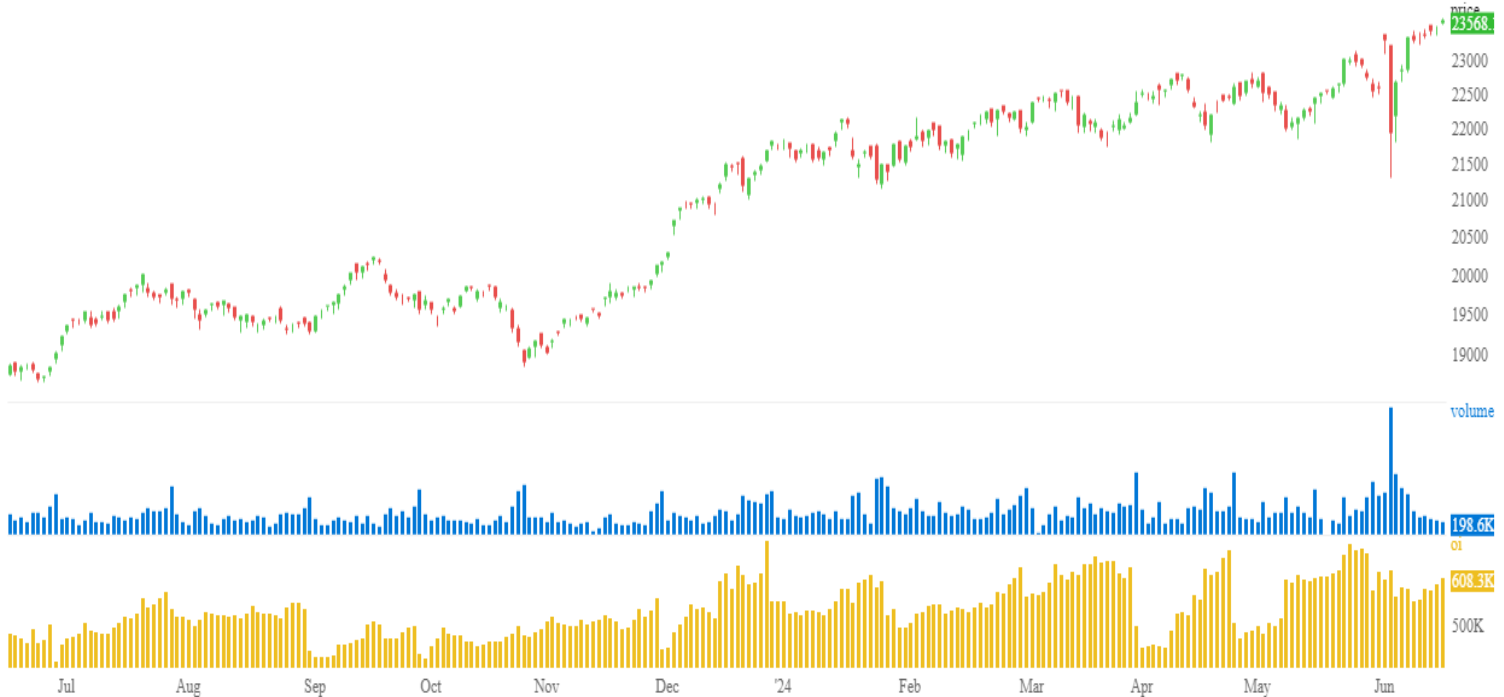
# DERIVATIVE REPORT



# Derivative Report

## A hurdle at 23550 before weekly expiry

NIFTY 23568.10 +101.45 ▲ 0.4%



- An increase in OI and increase in price indicates Long Build-up in the market.
- The Nifty FII LS ratio is standing at 1.219 compared to previous day 1.579 which indicates that the FII's have decreased their long position.
- The PCR standing at 1.165 indicates PE writers are active in the market.
- SB at 23500 followed by 234000 indicating the PE writers are expecting market to trade above 23500, if the market is able to trade below 23400 a SC can be seen in this strike, whereas LB in 23550 followed by 23600 indicates that the CE buyers are expecting market to trade above 23550 level, if the market is able to trade below 23500 level LL can be seen in this strike.
- VIX of 12.96 compared to previous 12.88 indicates increase in volatility.
- Till the time market is able to sustain above 23400 market is expected to move higher towards 23550-23700 levels. If 23400 is taken out would lead to a downward move towards 23200 followed by 23000 levels.

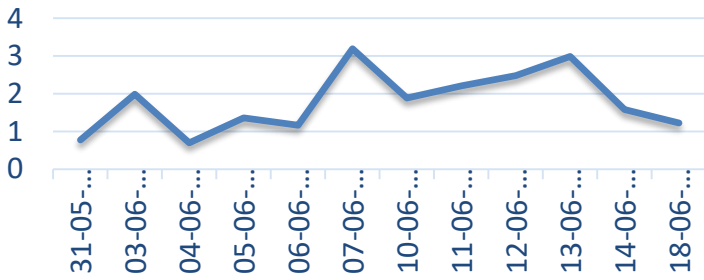
	SUPPORT	RESISTANCE		PRICE	OI
NIFTY 50	23400/23200	23600/23800	Near	23568.1	12311450
			Next	23688.55	2384475
			Far	23807.9	512125

	ADVANCE	DECLINE	AD RATIO
NIFTY	34	16	2.125
NIFTY F&O	123	63	1.95

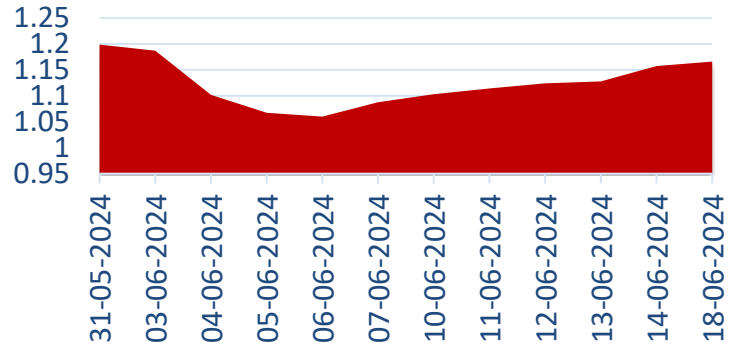
# Derivative Report

## NIFTY FII Long Short Ratio



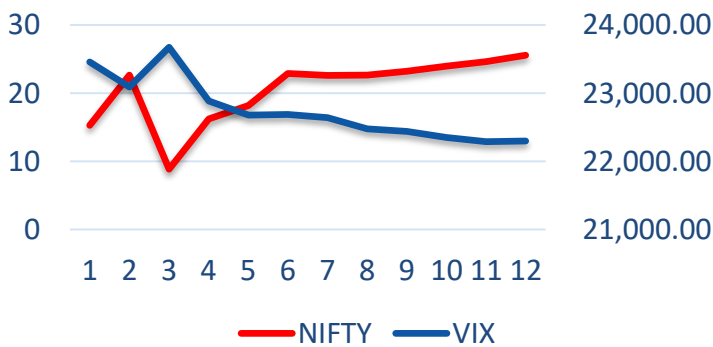
The Nifty FII's Long Short Ratio is currently at 1.21, down from 1.57 the previous day, suggesting that FIIs have squared off their long positions and increased their short positions.

## PCR



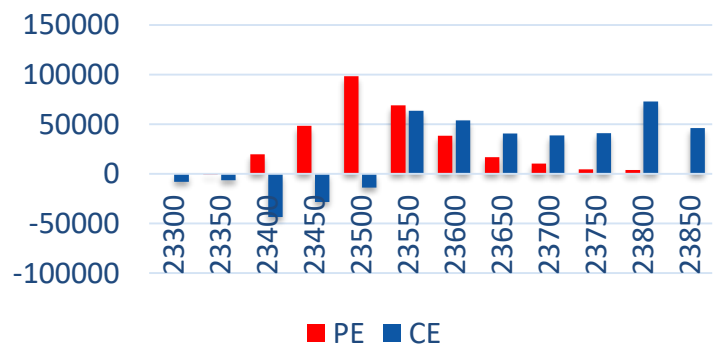
The Nifty PCR increased from 1.157 to 1.165, indicating PE writers are adding position. PE writer increasing indicates that the market participant are expecting market to trade flat to positive.

## NIFTY & VIX



Increase in VIX from 12.88 to 12.97 indicates a increase in volatility. The current VIX level of 12.97 suggests a potential movement of 0.816% either upside or downside (1 standard deviation).

## Nifty Daily OI



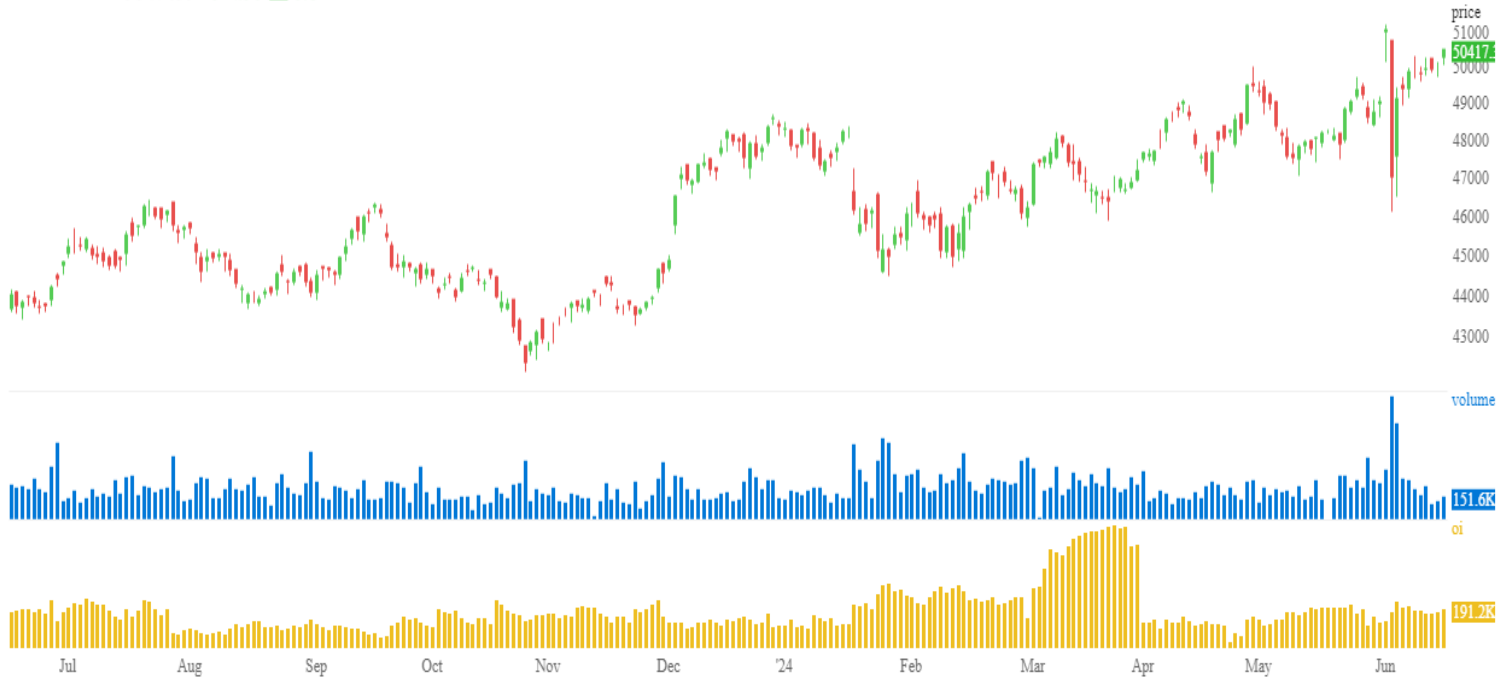
CE writers have been aggressively selling at the 23800 strike, followed by the 23550 strike, while PE writers are predominantly active at the 23500 level, followed by 23550. This indicates a tug war between the PE & CE writers at 23550. If the 23550 level is breached on the upside, we can expect a move towards 23600, followed by 23800. Conversely, if the 23550 level is breached on the downside, a move towards 23500, followed by 23450, can be anticipated.



# Derivative Report

## BNF before weekly expiry

BANKNIFTY 50417.35 +374.95 ▲ 0.8%



- An increase in OI and increase in price indicates Long Build-up in the market.
- The BNF FII LS ratio is standing at 1.46 compared to previous day 0.73 which indicates that the FII's has sq. off there short position and added long position.
- The Put-Call Ratio (PCR) stands at 1.04, from the previous day's 1.02, indicating a tug of war between Put (PE) and Call (CE) writers.
- A LB at 50400 followed by 50500 CE, and well as SB at 50400 PE followed 50200 indicates that the market participant are expecting market to trade above 50400 levels.
- Till the time market is able to sustain above 50200 market is expected to move higher towards 50700-51000 levels. If 50200 is taken out it would lead to a downward move towards 50000-49800 levels.

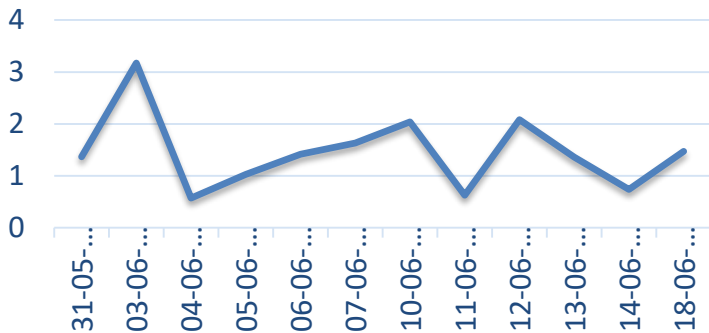
	SUPPORT	RESISTANCE
BNF	50200/49800	50700/51000
	ADVANCE	DECLINE
BNF	11	1

	PRICE	OI
Near	50417.35	2458050
Next	50662.4	312450
Far	50908.75	97380

# Derivative Report

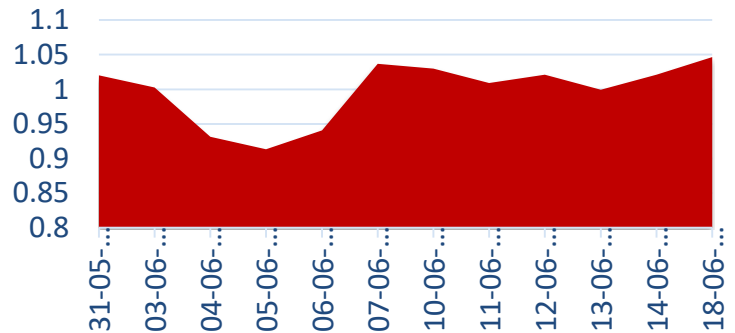


## BNF FII Long Short Ratio



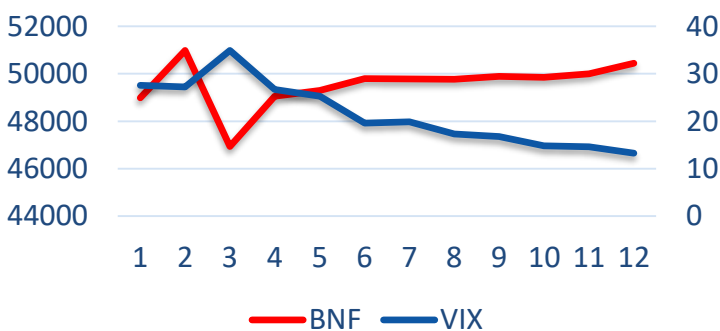
The BNF FII Long Short ratio has increased from 0.73 to 1.46 which indicates FII's adding new long position in the Index.

## BNF PCR



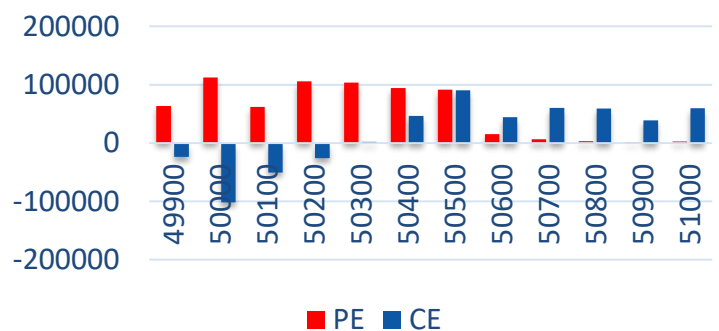
The BNF PCR has increased from 1.02 to 1.04, indicating a balance between PE and CE writers. This reflects a tug of war scenario, suggesting that market participants are not anticipating a significant move.

## BNF & VIX



A decline in VIX indicates a decrease in volatility. Based on the VIX, a 1 standard deviation move can be expected to be 0.83% upside or downside.

## BNF Daily OI



Highest CE writing is seen at 50500 level followed by 50700 level which will act as a resistance for the market. On the PE side 50000 strike has seen the highest writing followed by 50200 which will act as support.

# Derivative Report



## Participant wise Future Index OI

Participant	Long	Short	Ratio
Client	381387	365642	1.043061
DII	108651	131923	0.823594
FII	246244	259096	0.950397
Pro	91637	71258	1.285989

## Participant wise Future Stock OI

Participant	Long	Short	Ratio
Client	2124409	264367	8.035833
DII	192081	2818744	0.068144
FII	2101673	1652519	1.2718
Pro	609318	291851	2.087771

## Long Build-up

Symbol	Price	Price (Chng %)	OI (Chng %)
ALKEM	5235.50	2.46	25.45
CANFINHO ME	891.35	6.76	19.30
M&M FIN	308.80	3.57	11.34
GNFC	705.25	3.11	7.75
MOTHERSON	180.90	3.58	6.98

## Short Build-up

Symbol	Price	Price (Chng %)	OI (Chng %)
GRASIM	2463.20	-0.52	19.34
UNITSPIRT	1256.10	-1.01	15.33
HAVELLS	1834.20	-0.58	11.70
METROPOLIS	1961.95	-0.16	6.85
MUTHOOTFIN	1754.25	-0.88	6.56

## Short Covering

Symbol	Price	Price (Chng %)	OI (Chng %)
TRENT	5361.20	1.95	-9.85
GMRINFRA	97.85	4.21	-9.19
MGL	1472.55	0.42	-8.80
POWERGRID	331.80	3.19	-7.07
BPCL	631.15	0.53	-5.55

## Long unwinding

Symbol	Price	Price (Chng %)	OI (Chng %)
JINDALSTL	1035.70	-1.83	-15.82
ASHOKLEY	239.70	-0.13	-6.53
BALRAMCHIN	430.30	-0.27	-473
ULTRACEM	11139.65	-0.73	-2.98
SUNTV	755.40	-0.25	-2.61

# Derivative Report



## Sr. Technical Equity Research Analyst Mr. Kunal Kamble

Disclosure: Bonanza Portfolio Ltd here by declares that views expressed in this report accurately reflect view point withsubject to companies/securities. Bonanza Portfolio Ltd is responsible for the preparation of this research report and has taken reasonable care to achieve and maintain independence and objectivity in making any recommendations. Bonanza Portfolio Ltd or its associates or Analyst or his relatives may or may not hold beneficial ownership of 1% or more in the subject company at the end of the month immediately precedingthe date of publication of this research report. Bonanza Portfolio Ltd operates under the regulation of SEBI RegnNo.INH100001666 Disclaimer: This research report has been published by Bonanza portfolio Ltd and is meant solely for use by the recipient and is not for circulation. This document is for information purposes only and information / opinions/ views are not meant to serve as a professional investment guide for the readers. Reasonable care has been taken to ensure that information given at the time believed to be fair and correct and opinions based thereupon are reasonable, due to the nature of research it cannot be warranted or represented that itis accurate or complete and it should not be relied upon as such. If this report is inadvertently send or has reached to any individual, same may be ignored and brought to the attention of the sender. Preparation of this research report does not constitute a personal recommendation or take into account the particular investment objectives, financials situations, and or needs of individual clients. Past performance is not a guide for future performance. This Report has been prepared on the basis of publicly available information,internally developed data and other sources believed by Bonanza Portfolio Ltd to be reliable. This report should not be taken as the only base for any market transaction; however, this data is representation of oneof the support document among other market risk criterion. The market participant can have an idea of riskinvolved to use this information as the only source for any market related activity. The distribution of this report in definite jurisdictions may be restricted by law, and persons in whose custody this report comes, should observe, any such restrictions. The revelation of interest statements integrated in this analysis are provided exclusively to improve & enhance the transparency and should not be treated as endorsement of the views expressed in the analysis. The price and value of the investments referred to in this report and theincome from them may go down as well as up. Bonanza portfolio Ltd or its directors, employees, affiliates or representatives do not assume any responsibility for, or war rant the accuracy, completeness, adequacy and reliability of such information / opinions / views. While due care has been taken to ensure that the disclosures and opinions given are fair and reasonable, none of the directors, employees, affiliates or representatives of Bonanza Portfolio Ltd shall be liable. Research report may differ between Bonanza Portfolio Ltd RAs and other companies on account of differences in, personal judgment and difference in time horizons for which recommendations are made. Research entity has not been engaged in market making activity for the subject company. Research analyst has not served as an officer, director or employee of the subject company. Research analyst have not received any compensation/benefits from the Subject Company or third party in connection with the research report Bonanza Portfolio Ltd .Bonanza House, PlotNo.M-2, Cama Industrial Estate. Walbhat Road ,Goregaon(E),Mumbai– 400063Website:<https://www.bonanzaonline.com> SEBIRegn.No.:INZ000212137 BSECM:INB011110237| BSEF&O:INF011110237|MSEI: INE260637836|CDSL:a)12033500| NSDL:a)IN301477|b)IN301688(Delhi)|PMS:INP000000985|AMFI:ARN0186 2018©BonanzaPortfolioLtd. Bonanza Portfolio Ltd.Bonanza Research Desk, Mumba