



Global Equity Indices	Country	Close	Previous Month's Close (Feb)	Return
DOW Jones Industrial Average (DJIA)	USA	33274.16	32656.71	1.89%
NASDAQ	USA	13181.35	12018.40	9.67%
S&P 500	USA	4109.35	3970.16	3.50%
FTSE 100	UK	3585.61	3570.56	0.42%
DAX	GERMANY	15628.84	15365.14	1.71%
CAC 40	FRANCE	7322.39	7267.94	0.74%
NIKKEI 225	JAPAN	28041.26	27445.49	2.17%
HANG SENG	HONG KONG	20400.12	19785.95	3.10%
SHANGHAI SE COMPOSITE	CHINA	3072.36	3280.15	-6.33%
KOSPI	SOUTH KOREA	2476.86	2412.85	2.65%

## GLOBAL COMMODITIES

Global Commodities and Index	Exchange	Close	Previous Month's Close (Feb)	Return
CRB Index	Commodity Index	293.90	295.01	-0.37%
GOLD	COMEX	1968.53	1826.69	7.76%
SILVER	COMEX	24.09	20.88	15.37%
WTI CRUDE	NYMEX	75.6	76.7	-1.43%
BRENT CRUDE	ICE	79.73	83.09	-4.32%
NATURAL GAS	NYMEX	2.192	2.790	-21%
COPPER	COMEX	4.07	4.07	0.16%
ALUMINIUM	COMEX	2409.46	2364.19	1.94%

## FOREX MARKET

MAJOR CURRENCY PAIR	Exchange	Close	Previous Month's Close (Feb)	Return
USDINR	NSE	82.14	82.62	-0.58%
EURINR	NSE	89.08	87.39	1.93%
GBPINR	NSE	101.31	99.31	1.06%
JPYINR	NSE	61.84	60.63	1.99%
EURUSD	NSE	1.08433	1.05723	2.56%
GBPUSD	NSE	1.23346	1.20189	2.62%
USDJPY	NSE	129.645	136.115	-4.75%

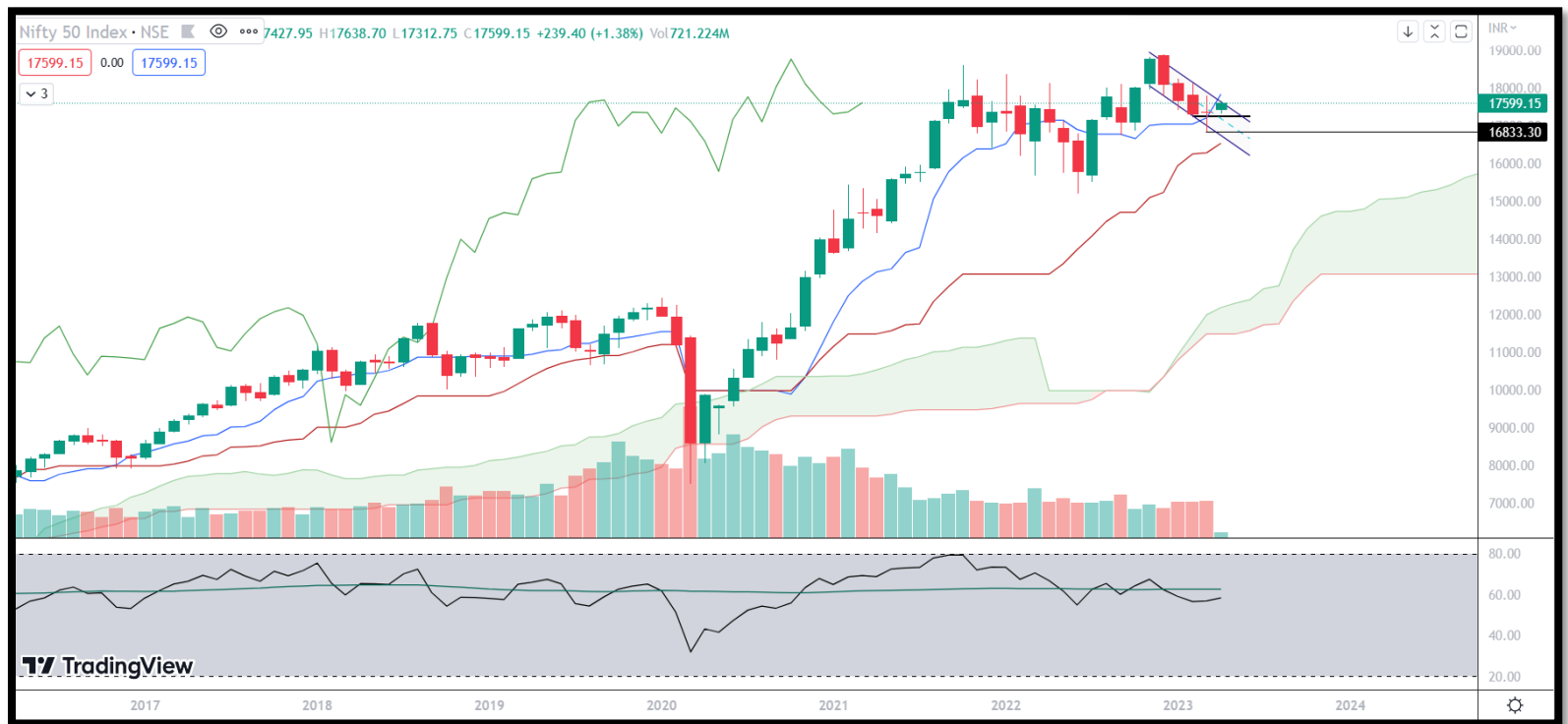
## DOMESTIC MARKET PERFORMANCE

Equity Indices	Exchange	Close	Previous Month's Close (Feb)	Return
NIFTY	NSE	17359.75	17303.95	0.32%
SENSEX	BSE	58991.52	58962.12	0.04%
NIFTY MIDCAP 100	NSE	30035.15	30117.30	-0.27%
NIFTY SMALL CAP 100	NSE	8994.75	9155.60	-1.75%

## SECTOR WATCH

SECTORAL INDICES	Exchange	Close	Previous Month's Close (Feb)	Return
NIFTYBANK	NSE	40608.65	40269.05	0.84%
IT	NSE	28698.60	29663.95	-3.25%
FINANCIAL SERVICES	NSE	18058.70	17989.65	0.38%
AUTO	NSE	12243.80	12731.80	-3.83%
METAL	NSE	5497.45	5269.10	4.33%
PHARMA	NSE	12017.05	11747.10	2.29%
PSUBANK	NSE	3716.15	3658.35	1.57%
MEDIA	NSE	1700.10	1704.80	-0.27%
REALTY	NSE	387.35	393.20	-1.48%

## NIFTY MONTHLY CHART



The nifty index saw a volatile month as the index traded between 17799.95 to 16828.35 levels. The highlight of the month was witnessed a buying from the lower levels. On a Monthly chart, Nifty Index formed a Doji candlestick. Nifty Index has broken the rising channel on a weekly scale with the bearish candlestick.

On a monthly scale, The Technical indicator Ichimoku cloud suggests that the price is trading below the conversion line, which now acts as a resistance for the market.

On the indicator front, the momentum oscillator RSI (14) is 49 and continues to follow the same. FIIs where the net Buying for the March Month was around 1,997.70 Cr and net Buying by the DIIs is worth 30,548.77 Cr.

Global cues will play an important role in the overall direction of the market were commodity prices, Inflation, and economic data will be important. Market breadth for the majority of the days was in favor of the Bearish.

We feel that the current trend in Nifty is Bearish to range bound between 16800 and 17900. If the Nifty manages to hold below the 17300 level, the price may head towards 16700 levels. Our Bearish view will negate if Nifty closed above 17900 levels.

**Technical Equity Research Analyst  
Mr. Ashish Katwa**

**Disclosure:**

Bonanza Portfolio Ltd here by declares that views expressed in this report accurately reflect view point with subject to companies/securities. Bonanza Portfolio Ltd is responsible for the preparation of this research report and has taken reasonable care to achieve and maintain independence and objectivity in making any recommendations. Bonanza Portfolio Ltd or its associates or Analyst or his relatives may or may not hold beneficial ownership of 1% or more in the subject company at the end of the month immediately preceding the date of publication of this research report.

BonanzaPortfolioLtd operates under the regulation of SEBIRegn No. INH100001666

**Disclaimer:**

This research report has been published by Bonanza portfolio Ltd and is meant solely for use by the recipient and is not for circulation. This document is for information purposes only and information / opinions / views are not meant to serve as a professional investment guide for the readers. Reasonable care has been taken to ensure that information given at the time believed to be fair and correct and opinions based thereupon are reasonable, due to the nature of research it cannot be warranted or represented that it is accurate or complete and it should not be relied upon as such. If this report is inadvertently send or has reached to any individual, same may be ignored and brought to the attention of the sender. Preparation of this research report does not constitute a personal recommendation or take into account the particular investment objectives, financial situations, or needs of individual clients. Past performance is not a guide for future performance. This Report has been prepared on the basis of publicly available information, internally developed data and other sources believed by Bonanza portfolio Ltd to be reliable. This report should not be taken as the only base for any market transaction; however this data is representation of one of the support document among other market risk criterion. The market participant can have an idea of risk involved to use this information as the only source for any market related activity. The distribution of this report in definite jurisdictions may be restricted bylaw, and persons in whose custody this report comes, should observe, any such restrictions. The revelation of interest statements integrated in this analysis are provided exclusively to improve & enhance the transparency and should not be treated as endorsement of the views expressed in the analysis. The price and value of the investments referred to in this report and the income from them may go down as well as up. Bonanza portfolio Ltd or its directors, employees, affiliates or representatives do not assume any responsibility for, or warrant the accuracy, completeness, adequacy and reliability of such information / opinions / views. While due care has been taken to ensure that the disclosures and opinions given are fair and reasonable, none of the directors, employees, affiliates or representatives of Bonanza portfolio Ltd shall be liable. Research report may differ between Bonanza portfolio Ltd RAs and other companies on account of differences in, personal judgment and difference in time horizons for which recommendations are made. Research entity has not been engaged in market making activity for the subject company. Research analyst has not served as an officer, director or employee of the subject company. Research analyst have not received any compensation/benefits from the subject company or third party in connection with the research report

*Bonanza Portfolio Ltd. Bonanza House, Plot No. M-2, Cama Industrial Estate. Walbhat Road, Goregaon (E), Mumbai – 400063 Web site:*

<https://www.bonanzaonline.com>

*SEBI Regn. No.:INM000012306 | NSE CM:INB 230637836 | NSE F&O: INF 230637836 | NSE CDS: INE 230637836 |*

*BSE CM:INB 011110237| BSE F&O:INF 011110237| MSEI:INE 260637836*

*| CDSL:a) 120 33500|*

*NSDL:a) IN 301477| b) IN 301688(Delhi) | PMS:INP 000000985 | AMFI: ARN -0186*

*2018 © Bonanza Portfolio Ltd*

**Bonanza Research Desk, Mumbai**